



### 1/8 Pilot Operated Check Modular Valves

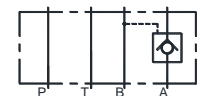
#### Specifications

Max. Operating Pressure Kgf/cm <sup>2</sup>	Max. Flow L/min.
315	35

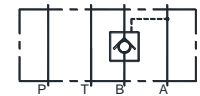
#### Model Number Designation

F-	OMPA	-01	-2	10
Special seals	Series Number	Valve Size	Cracking Pressure Kgf/cm <sup>2</sup>	Design Number
<b>F:</b> Special Seals For Phosphate Ester Type Fluids (Omit if not required)	<b>OMPA:</b> A-Line <b>OMPB:</b> B-Line <b>OMPW:</b> A.B-Line	<b>01</b>	<b>2:2</b> <b>4:4</b>	<b>10</b>

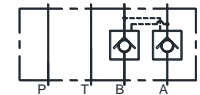
#### Graphic Symbols



OMPA-01



OMPB-01

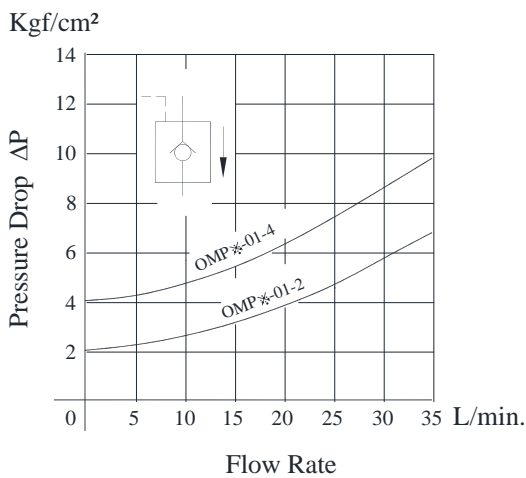


OMPW-01

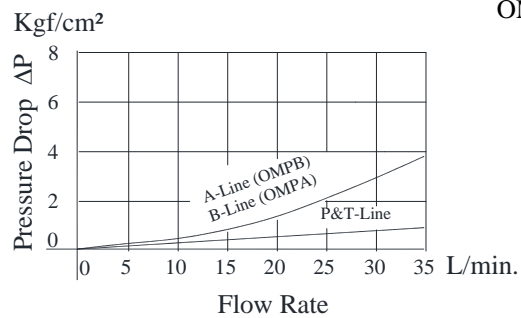
#### Typical Performance Characteristics

Hydraulic Fluid: Viscosity 35cSt, Specific Gravity 0.850

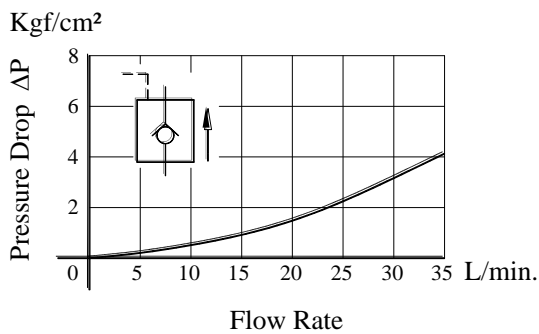
##### Pressure Drop for Free Flow



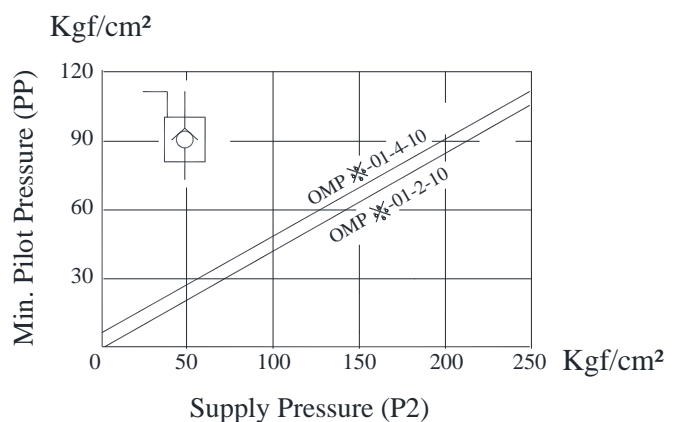
##### Pressure Drop



##### Pressure Drop for Reversed Controlled Flow



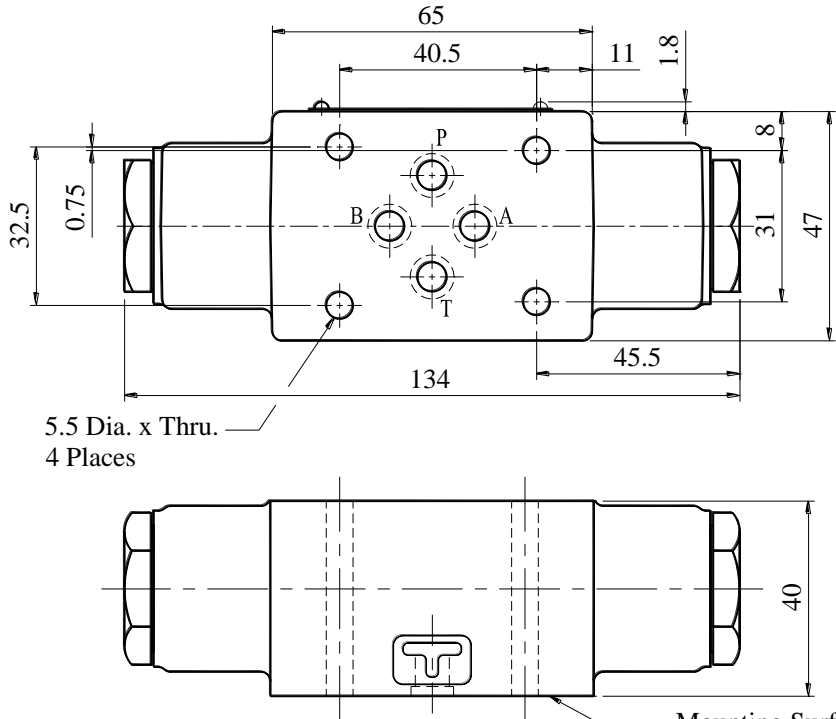
##### Min. Pilot Pressure





- OMPA-01-※-10
- OMPB-01-※-10
- OMPW-01-※-10

DIMENSIONS IN MILLIMETER



Mounting Surface (O-Ring Furnished)

Mass ..... 1.2Kg

Spare Parts List

List of Seals

Sl. No.	Name of Parts	Parts Numbers	Qty.
			OMP※-01
1	O-Ring	SO-NB-P9	4
2	O-Ring	SO-NB-P18	2

Note: When ordering the seals, please specify the seal kit number from the table below.

List of Seal Kit

Model Numbers	Seal Kit Number
OMPA-01	KS-OMAC-01-10
OMPB-01	
OMPW-01	