



### 1/8 Reducing Modular Valves

#### Specifications

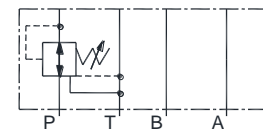
Max. Operating Pressure Kgf/cm <sup>2</sup>	Max. Flow L/min.
250	35

#### Model Number Designation

F-	OMRP	-01	-B	10
Special Seals	Series Number	Valve Size	Pres. Adj. Range Kgf/cm <sup>2</sup>	Design Number
<b>F:</b> Special Seals for Phosphate Ester Type Fluids (Omit if not required)	<b>OMRP:</b> Reducing Modular Valves for P-Line	<b>01</b>	<b>A:</b> 3 ~40 <b>B:</b> * ~ 70 <sup>*1</sup> <b>C:</b> 35 ~140 <b>H:</b> 70 ~210	<b>10</b>

\*1. See the "Minimum Adjustment Pressure" for the item marked \*  
 Note : If the setting pressure is less than 19 Kgf/cm<sup>2</sup> maximum flow is limited.  
 See the following "Minimum Adjustment Pressure vs. Max. Flow" for serviceable range.

#### Graphic Symbol

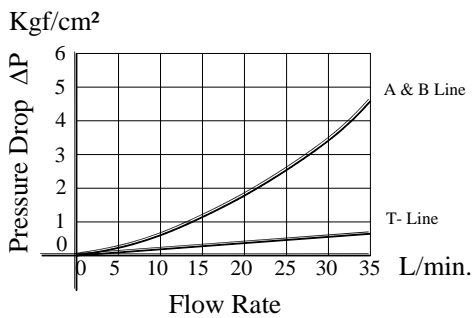


OMRP-01

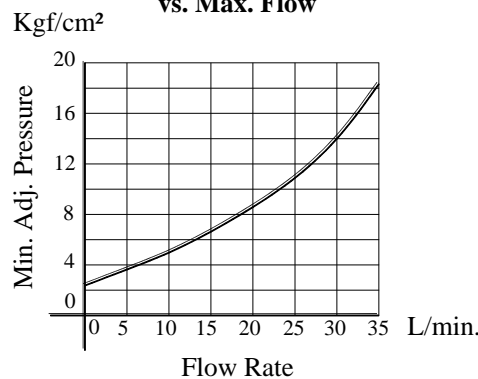
#### Typical Performance Characteristics

Hydraulic Fluid: Viscosity 35cSt, Specific Gravity 0.850

##### Pressure Drop

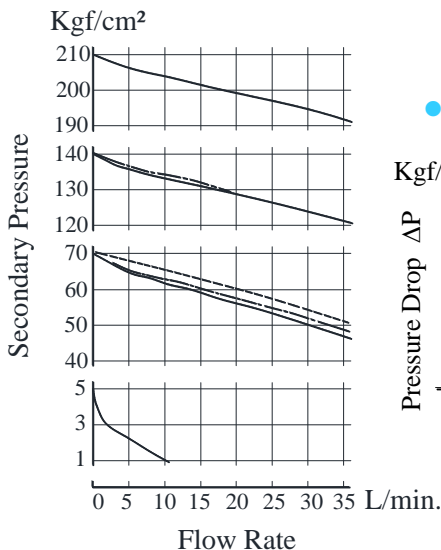


##### Min. Adjustment Pressure vs. Max. Flow

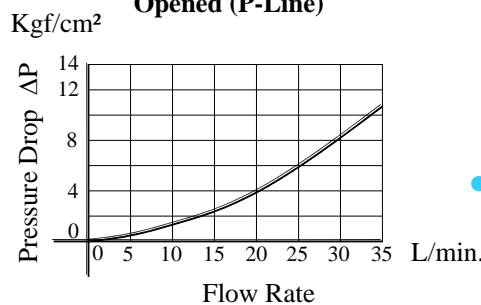


##### Nominal Override Characteristics

Primary Pressure 250 Kgf/cm<sup>2</sup>



##### Pres. Drop at Spool Fully Opened (P-Line)



#### Instructions

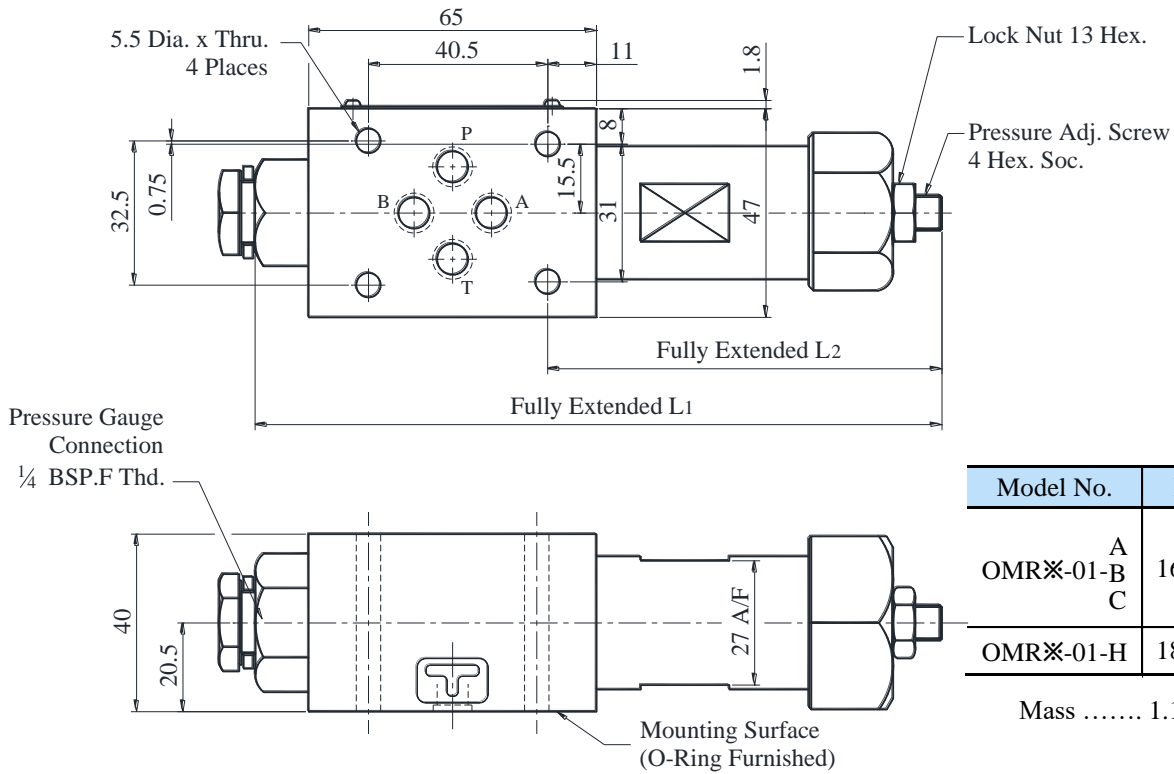
- **Minimum Adjustment Pressure** varies according to the back pressure at tank line. Therefore, please obtain it from the following formula.  
 Min. Adjustment Pressure = Value obtained from minimum adjustment pressure characteristics curve and back pressure at tank line.
- The back pressure at the tank line should be obtained by adding the tank line pressure drop for each valve to be stacked.  
 To make pressure adjustment, loosen the lock nut and turn the pressure adjustment screw clockwise or anticlockwise.  
 For an increase of pressure, turn the screw clockwise. Be sure to re-tighten the lock nut firmly after making adjustment to the pressure.

-----'B'  
 .....'C'  
 \_\_\_\_\_'H'



DIMENSIONS IN MILLIMETER

● OMRP-01-※-10



Model No.	L <sub>1</sub>	L <sub>2</sub>
OMR※-01-A	166.2	92
OMR※-01-B		
OMR※-01-C		
OMR※-01-H	183.2	109

Mass ..... 1.1Kg.

■ Spare Parts List

● List of Seals

Sl. No.	Name of Parts	Parts Numbers	Qty.
			MR※-01
1	O-Ring	SO-NB-P9	4
2	O-Ring	SO-NB-P18	2
3	O-Ring	SO-NA-P20	1

Note: When ordering the seals, please specify the seal kit number from the table below.

● List of Seal Kit

Model Numbers	Seal Kit Number
OMRP-01	KS-OMBP-01-10