

1/8 Throttle and Check Modular Valves

Specifications

Max. Operating Pressure Kgf/cm ²	Max. Flow L/min.
250	35

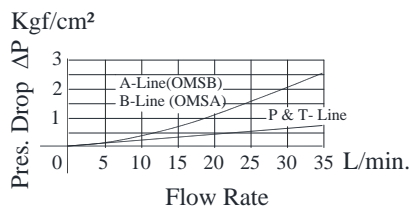
Model Number Designation

F-	OMSW	-01	-X	Y	-10
Special seals	Series Number	Valves Size	Direction of Flow ("A" line)	Direction of Flow ("B" line)	Design Number
F: Special Seals For Phosphate Ester Type Fluids (Omit if not required)	OMSA: Throttle and Check Modular Valves for A-Line OMSB: Throttle and Check Modular Valves for B-Line	01	X: Metre-Out Y: Metre-In	---	10
			---	X: Metre-Out Y: Metre-In	
	X: Metre-Out Y: Metre-In				
	X: Metre-Out Y: Metre-In				
	X: Metre-Out Y: Metre-In		Y: Metre-In X: Metre-Out		
	Y: Metre-In X: Metre-Out		X: Metre-Out		

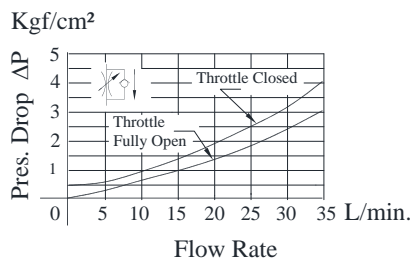
Typical Performance Characteristics

Hydraulic Fluid: Viscosity 35cSt, Specific Gravity 0.850

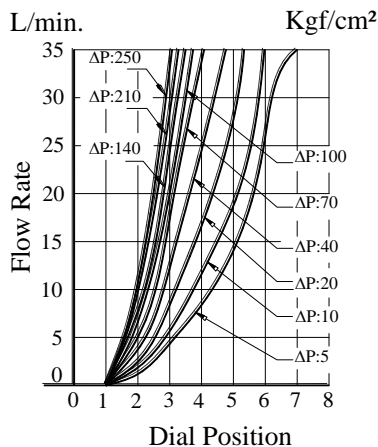
Pressure Drop



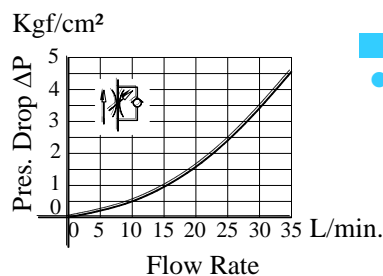
Pressure Drop for Free Flow



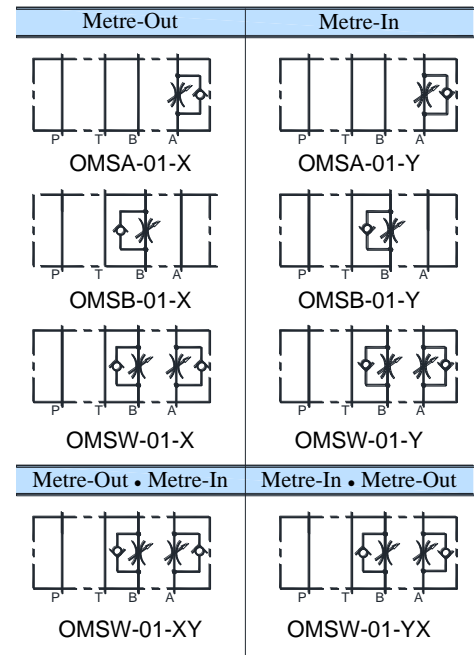
Metred Flow Vs. Dial Position



Pressure Drop at Throttle Fully Open



Graphic Symbols

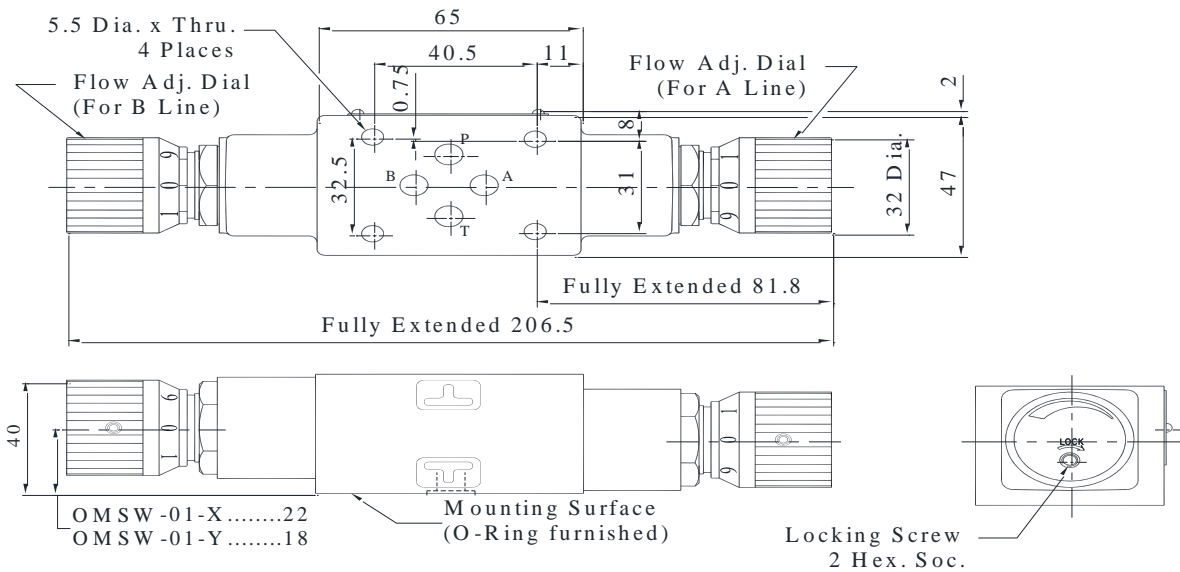


Instructions

- To make flow rate adjustment, loosen locking screw for the dial and turn the flow rate adjustment dial clockwise or anti-clockwise. For a decrease of flow, turn the dial clock-wise. Be sure to re-tighten the locking screw firmly after the adjustment of the flow rate.

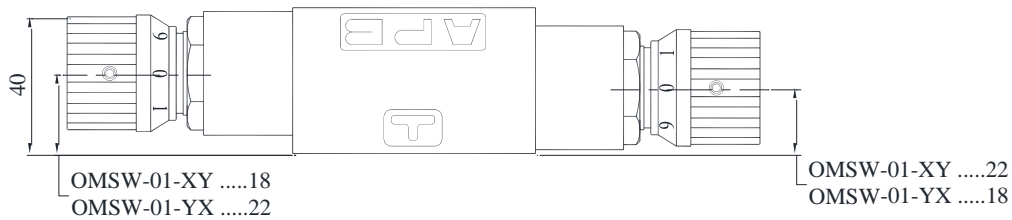


● OMSW-01-X-Y-10



● OMSW-01-XY-30
YX

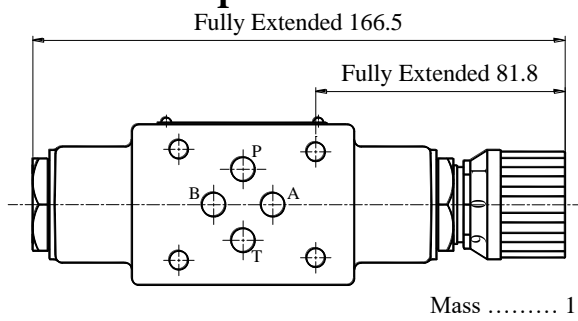
DIMENSIONS IN MILLIMETER



For other dimensions, refer to above (OMSW-01-X-Y) drawing.

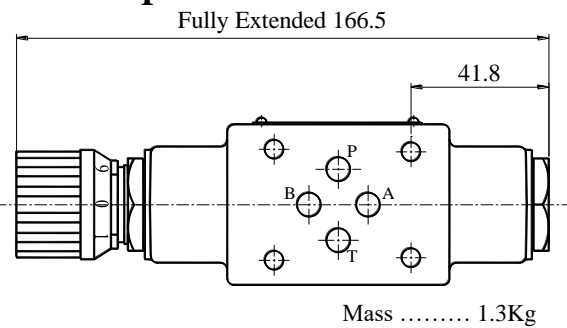
Mass 1.5Kg

● OMSA-01-X-Y-10



For other dimensions, refer to above (OMSW-01-X-Y) drawing.

● OMSB-01-X-Y-10



For other dimensions, refer to above (OMSW-01-X-Y) drawing.

■ Spare Parts List

● List of Seals

Sl. No.	Name of Parts	Part Numbers	Qty.		
			MSA-01	MSB-01	MSW-01
1	O-Ring	SO-NA-P6	1	1	2
2	O-Ring	SO-NB-P9	4	4	4
3	O-Ring	SO-NB-P18	2	2	2
4	Back-Up Ring	SO-BB-P6	1	1	2

Note: When ordering the seals, please specify the seal kit number from the table right.

● List of Seal Kits

Model Numbers	Seal Kit Numbers
OMSA-01	KS-OMSA-01-10
OMSB-01	
OMSW-01	KS-OMSW-01-10