

3/8 Throttle and Check Modular Valves

Specifications

Max. Operating Pressure Kgf/cm <sup>2</sup>	Max. Flow L/min.
250	70

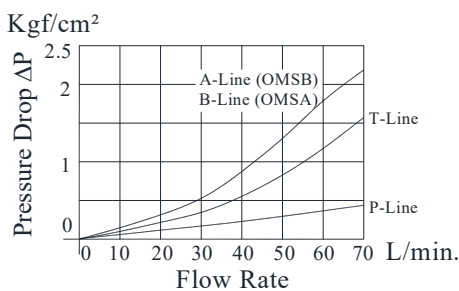
Model Number Designation

F-	OMSA	-03	-X	L	-10
Special Seals **	Series Number	Valve Size	Direction of Flow	Differential Pressure Range Kgf/cm <sup>2</sup>	Design Number
<b>F:</b> Special Seals for Phosphate ester Type Fluids (Omit if not required)	<b>OMSA:</b> A-Line <b>OMSB:</b> B-Line <b>OMSW:</b> A.B-Line	<b>03</b>	<b>X:</b> Meter -Out <b>Y:</b> Meter -In	<b>L:</b> Pressure Diff. 5-50 <b>H:</b> Pressure Diff. 50-250	<b>10</b>

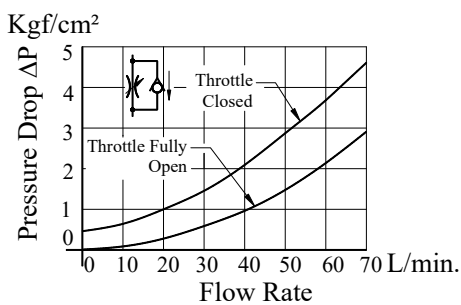
Typical Performance Characteristics

Hydraulic Fluid: Viscosity 35cSt, Specific Gravity 0.850

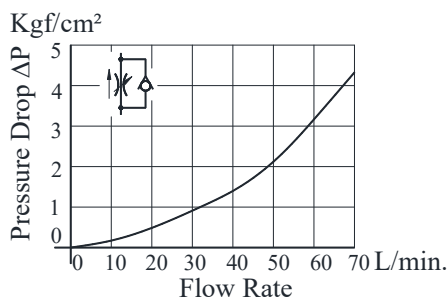
Pressure Drop



Pressure Drop for Free Flow



Pressure Drop at Throttle Fully Open



Model Numbers	Graphic Symbols	Detailed Graphic Symbols
		Meter-Out
OMSA-03-X		
OMSB-03-X		
OMSW-03-X		
		Meter-In
OMSA-03-Y		
OMSB-03-Y		
OMSW-03-Y		

Instructions

- To make flow rate adjustment, loosen locking screw for the dial and turn the flow rate adjustment dial clockwise or anti-clockwise. For a decrease of flow, turn the dial clock-wise. Be sure to re-tighten the locking screw firmly after the adjustment of the flow rate.

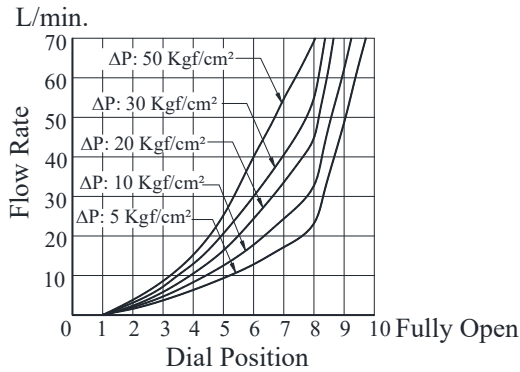
03 Series Modular Valves



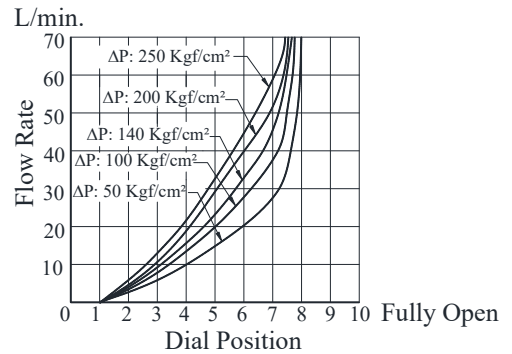
Metered Flow Vs. Dial Position

ΔP: Differential Pressure Kg/cm<sup>2</sup>

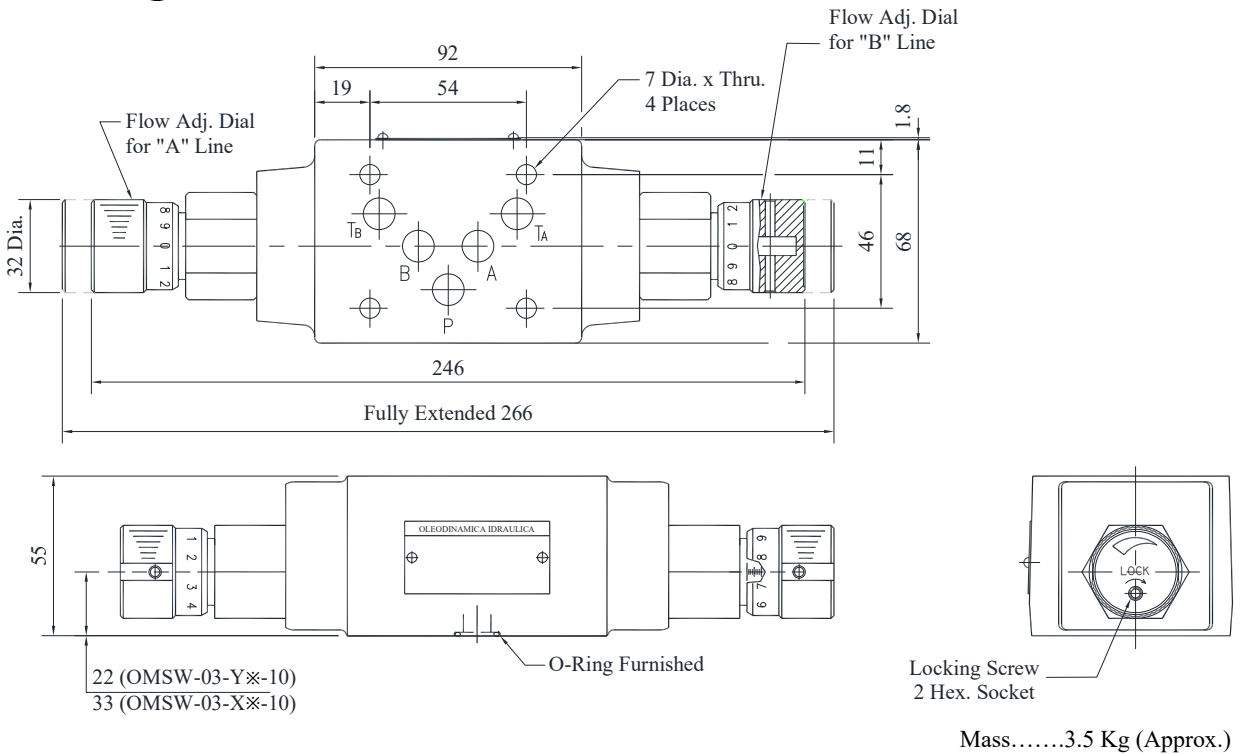
OMS\*-03-\* L



OMS\*-03-\* H

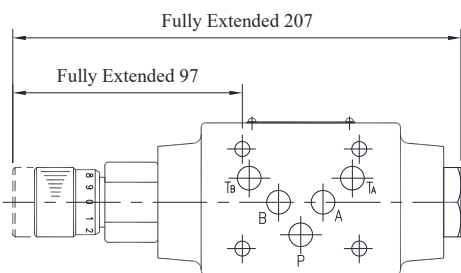


OMSW-03-X-Y\*-10



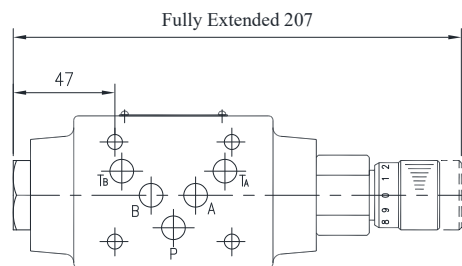
DIMENSIONS IN MILLIMETER

OMSA-03-X-Y\*-10



Mass.....3.5 Kg (Approx.)  
For Other Dimensions, refer to OMSW-03 drawing

OMSB-03-X-Y\*-10



Mass.....3.5 Kg (Approx.)  
For Other Dimensions, refer to OMSW-03 drawing



**Spare Parts List**

● **List of Seals**

Sl.No.	Name of Parts	Part Numbers	Qty.		
			OMSA-03	OMSB-03	OMSW-03
1	O-Ring	SO-NA-P7	1	1	2
2	O-Ring	SO-NB-P28	2	2	2
3	O-Ring	AS568A-014	5	5	5
4	Back up Ring	900-VK411915-2	1	1	2

Note: When ordering the seals, please specify the seal kit number from the table below.

● **List of Seal Kits**

Model Numbers	Seal Kit Numbers
OMSA-03	KS-OMSA-03-10
OMSB-03	
OMSW-03	KS-OMSW-03-10

